

VERSA-LOK BRONCO 18H

RETAINING WALL SYSTEM



NEED TO SUPERSIZE? MEET THE HEAVYWEIGHT.

When you've got a project that requires a heavy-duty retaining wall, call for Bronco 18H, the heavyweight segmental wall system from VERSA-LOK. Weighing in from 1,205 to 3,190 pounds and displaying 6 square feet of face area and a 3.2° batter, Bronco 18H has the heft and coverage to tackle any job. Alignment knobs molded into the top of units and channels molded into the bottom ensure correct near-vertical positioning and allow for tight joints with variable-bond construction.

The Bronco 18H system comprises 19 units: three wall units with varying depth, half unit, three freestanding units, L/R corner units, 9" step down unit, L/R corner caps, tapered cap unit, half taper cap, flat cap universal and runner and full high cap, cap end and cap half end. Bronco 18H can be used for walls up to 15 feet tall without soil reinforcement, making it ideal for projects with excavation constraints. It easily accommodates geogrid, such as VERSA-Grid, for taller walls. With near vertical construction and variable bond, Bronco 18H is more versatile than other comparable products. After installation, the natural stone appearance of the Bronco 18H wall face can be enhanced with stain to blend into the natural environment.

VERSA-LOK BRONCO 18H

RETAINING WALL SYSTEM



24 Unit
(BR24)



41 Unit
(BR41)



60 Unit
(BR60)

FULL BLOCKS 18" FACE HEIGHT



Corner Block (right & left)
(RCB & LCB)



Half Block
(HB)



9" Step Down Unit
(9" Step Down)

CORNERS & PARTIALS



Tapered Corner Cap (right & left)
(RCT & LCT)



Tapered Cap Unit
(TU)



Half Taper Cap
(HCT)

TAPERED CAPS 18" FACE HEIGHT



Freestanding Unit
(FS)



Freestanding End/
Corner Unit (FSC/E)



Freestanding Half End
(FSE/H)

FREESTANDING 18" FACE HEIGHT



Flat Cap Runner
(CAP)



Flat Cap Universal
(UCAP)

FLAT CAPS 6" FACE HEIGHT



Full High Cap
(FHC)

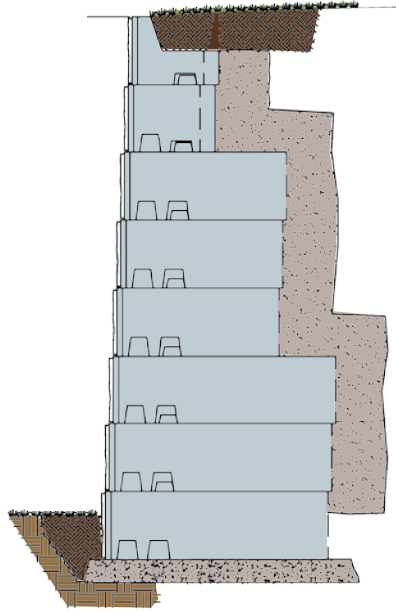


Full High Cap End
(FHC/E)



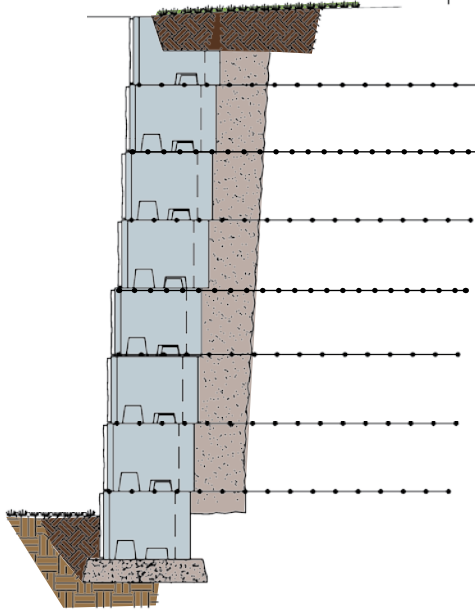
Full High Cap Half End
(FHC/H)

FULL HEIGHT CAPS 18" FACE HEIGHT

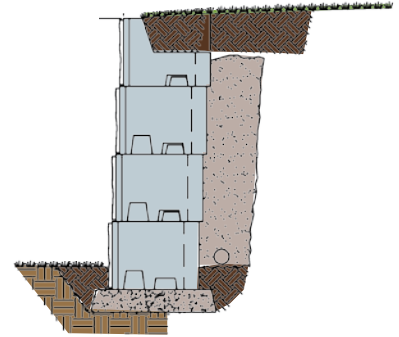


**GRAVITY WALL
EXTENDED DEPTH UNITS*
(NO GRID)**

*Maximum height of 6 ft. to 15 ft.
depending on unit depths and
site conditions



**REINFORCED WALL
24" UNITS
(VERSA-GRID)**



**GRAVITY WALL
24" UNITS**
(NO GRID)**

**Maximum height of 5 ft.
depending on site conditions

VERSA-LOK BRONCO 18H RETAINING WALL UNITS



24" Deep Unit
1,225 lbs.



41" Deep Unit
2,225 lbs.



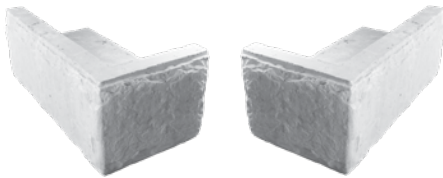
60" Deep Unit
3,215 lbs.



Cap Unit
900 lbs.



Half Unit
695 lbs.



Corner Cap (left & right)
1,145 lbs.



Corner Unit (left & right)
1,425 lbs.



Universal Flat Cap
550 lbs.



Freestanding Half Unit
605 lbs.



Freestanding Unit
1,285 lbs.



Freestanding End Unit
1,345 lbs.