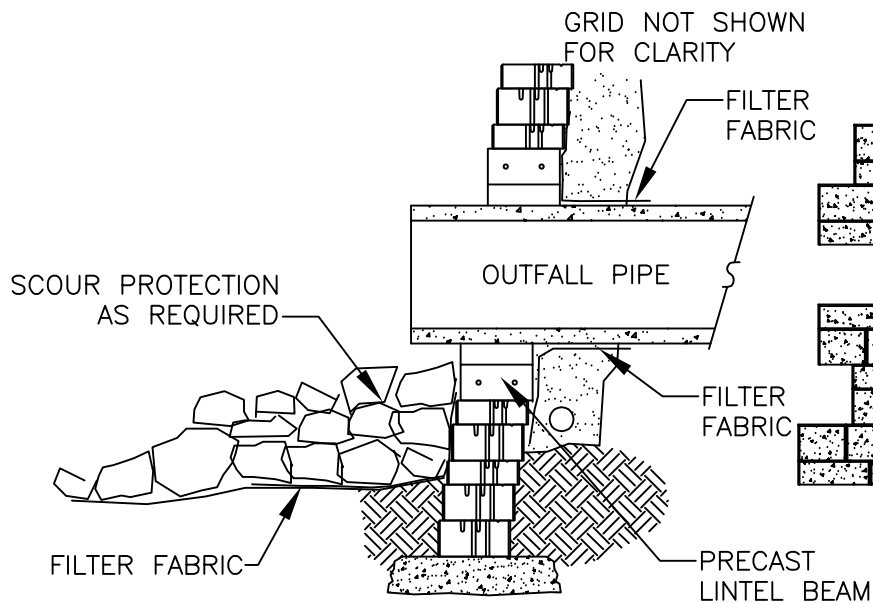


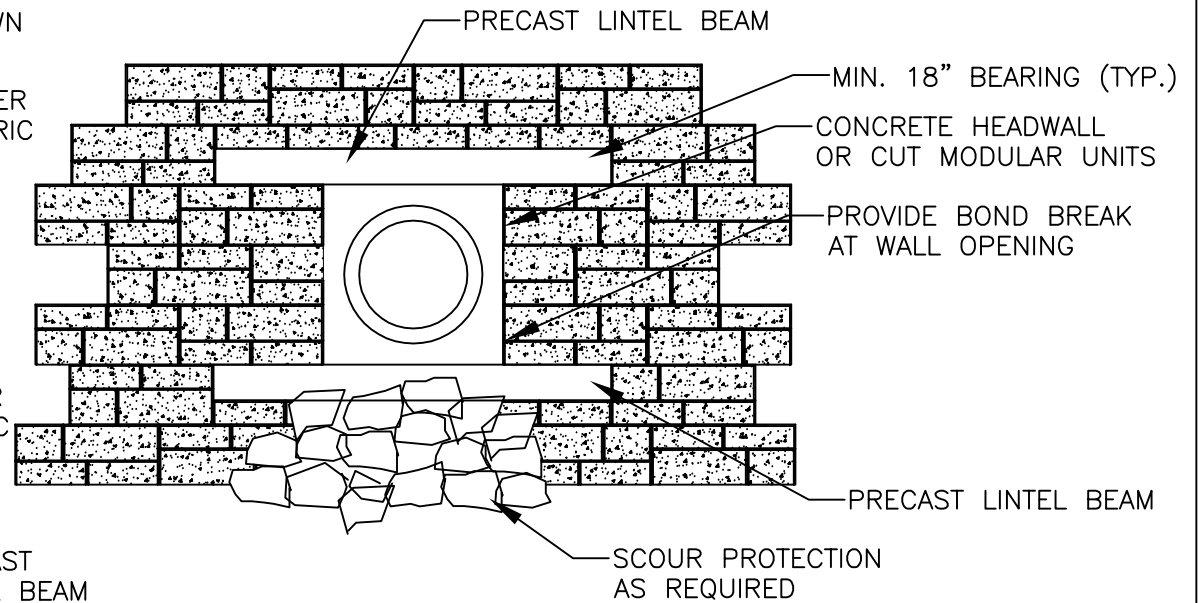
LINTEL NOTES:

- FINAL BEAM SIZE, REINFORCEMENT, AND CONFIGURATION TO BE DESIGNED BY WALL DESIGN ENGINEER
- LINTEL BEAMS SHALL BE PRECAST WITH MINIMUM 7 DAYS CURE
- HEIGHT OF BEAM SHALL CORRESPOND TO HEIGHT OF MODULAR UNITS
- PLACEMENT OF LINTEL BEAMS SHALL BE CONSISTENT WITH THE PLACEMENT OF OUTFALL PIPE
- INSTALL OUTFALL PIPE PRIOR TO CONSTRUCTION OF WALL ABOVE
- OUTFALL PIPE SHALL EXTEND BEYOND BASE COURSE OF WALL NO LESS THAN 6"
- GEOTEXTILE FABRIC SHALL BE INSTALLED AROUND PIPE OPENING
- LINTEL TO EXTEND MINIMUM 18" EITHER SIDE OF PIPE



WALL W/ PIPE PENETRATION

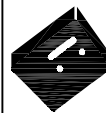
MOSAIC-SECTION
SCALE: NONE



WALL W/ PIPE PENETRATION

MOSAIC-PROFILE
SCALE: NONE

THESE PRELIMINARY DETAILS ARE INTENDED AS AN AID IN DESIGNING ATTRACTIVE, DURABLE RETAINING WALLS WITH VERSA-LOK UNITS. FINAL DETERMINATION OF THE SUITABILITY OF ANY INFORMATION OR MATERIAL FOR THE USE CONTEMPLATED, AND ITS MANNER OF USE, IS THE SOLE RESPONSIBILITY OF THE USER. A FINAL PROJECT SPECIFIC DESIGN SHOULD BE PREPARED BY A QUALIFIED, LICENSED, PROFESSIONAL ENGINEER.



VERSA-LOK®
Retaining Wall Systems

(800)770-4525 fax (651)770-4089
6348 Hwy36 Ste1, Oakdale, MN 55128 **Solid Solutions™**

VERSA-LOK MOSAIC DETAILS

WALL W/ PIPE PENETRATION

SCALE: 3/8"=1'

DRAWN BY: PPS

CHECKED BY:

DATE: 10/2007

DWG. NO. mosaic wall with pipe penetration